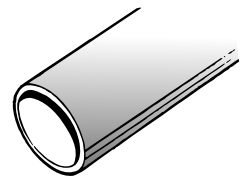


# TUBE - Welded Seam

BS3014, ASTM A269, A270 for general service and sanitary ('dairy') tubing.



OD		Wall Thickness mm	Weight kgs/m	T304	T316
mm	inch				
6.35	1/4	0.9	0.120	•	
7.94	5/16	0.9	0.156	•	
9.52	3/8	0.9	0.191	•	
9.52	3/8	1.2	0.257	•	•
12.7	1/2	0.9	0.261	•	
12.7	1/2	1.2	0.344	•	•
12.7	1/2	1.5	0.418	•	•
15.9	5/8	0.9	0.331	•	
15.9	5/8	1.2	0.439	•	•
15.9	5/8	1.5	0.538	•	•
19.0	3/4	0.9	0.414	•	
19.0	3/4	1.2	0.539	•	•
19.0	3/4	1.5	0.661	•	•
22.2	7/8	1.2	0.628	•	•
22.2	7/8	1.5	0.773	•	
25.4	1	0.9	0.522	•	
25.4	1	1.2	0.731	•	•
25.4	1	1.5	0.903	•	•
31.8	1-1/4	0.9	0.704	•	
31.8	1-1/4	1.2	0.925	•	•
31.8	1-1/4	1.5	1.145	•	•
38.1	1-1/2	0.9	0.849	•	
38.1	1-1/2	1.2	1.110	•	•
38.1	1-1/2	1.5	1.437	•	•
44.5	1-3/4	1.5	1.625	•	•
44.5	1-3/4	2.0	2.142	•	
50.8	2	0.9	1.233	•	
50.8	2	1.2	1.499	•	•
50.8	2	1.5	1.863	•	•
50.8	2	2.0	2.459	•	
63.5	2-1/2	1.2	1.883	•	
63.5	2-1/2	1.5	2.343	•	•
76.2	3	1.5	2.819	•	•
101.6	4	1.5	3.783	•	•
101.6	4	2.0	5.019	•	
152.4	6	1.5	6.050	•	•
152.4	6	2.0	7.543	•	•

• Denotes Normal Stock Range

Other sizes available on indent

**Finish** Polished. (Unpolished tube and architectural tube available on indent only)

**Length** 6m

See Table 4. on page 25 for Theoretical Internal Bursting Pressures (MPa) for Stainless Steel Tube

# ORNAMENTAL TUBE

ASTM A554/1995 not to be used in dairy, wine, or other food industries

OD mm	OD Inch	Wall Thickness	kg/m	304	316
19.05	1/4	1.5	0.661	•	•
25.4	1	1.5	0.903	•	•
31.8	1 - 1/4	1.5	1.145	•	•
38.1	1 - 1/2	1.5	1.437	•	•
50.8	2	1.5	1.863	•	•

• Denotes Normal Stock Range

Other sizes available on indent

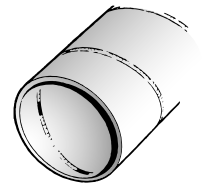
**Finish** 600 gmt, polished

**Length** 6m

**Uses** Hand rails, furniture, push-pits, etc.

# SPIRAL WELD TUBE

Manufactured to MAF Specifications



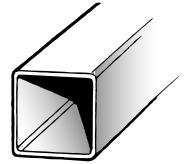
Diameter OD & ID mm	Wall Thickness mm	Weight kg/m	Working Pressure MPa	T304L	T316L
127	2.0	6.4	2.8	•	•
152	1.5	5.9	1.9	•	•
152	2.0	7.5	2.4	•	•
203	2.0	8.0	1.7	•	•
254	2.0	12.7	1.4	•	•
254	3.0	19.1	2.1	•	•
305	2.0	15.2	1.1	•	•
450	3.0	34.4	1.2	•	•
508	3.0	36.5	1.1	•	•

• Denotes Normal Stock Range  
Other sizes available on indent

**Finish** T304L and T316L fully pickled and passivated  
**Length** 6m standard or up to 9m (+ 10mm, -0mm)  
Spiral Weld Tube is available in both inside and outside diameters

# SQUARE TUBE - Welded Seam

ASTM A554



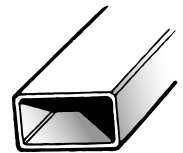
Diameter OD mm	Wall Thickness mm	Weight kgs/m	T304
12.7 x 12.7	1.2	0.450	•
19.05 x 19.05	1.2	0.691	•
19.05 x 19.05	1.5	0.852	•
25.4 x 25.4	1.2	0.933	•
25.4 x 25.4	1.5	1.151	•
31.8 x 31.8	1.2	1.185	•
31.8 x 31.8	1.5	1.470	•
38.1 x 38.1	1.2	1.425	•
38.1 x 38.1	1.5	1.780	•
50.8 x 50.8	1.2	1.898	•
50.8 x 50.8	1.5	2.356	•
50.8 x 50.8	2	3.115	•
76.2 x 76.2	2	5.003	•
76.2 x 76.2	3	7.430	•
101.6 x 101.6	3	9.343	•

• Denotes Normal Stock Range  
Other sizes available on indent

**Finish** Polished. (Unpolished tube, T316 and annealed tube to ASTM A249 available on request)  
**Length** 6m

# RECTANGULAR TUBE - Welded Seam

ASTM A554



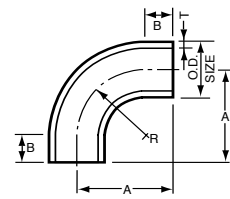
Diameter OD mm	Wall Thickness mm	Weight kgs/m	T304
40.0 x 18.0	1.2	1.085	•
40.0 x 25.4	1.2	1.221	•
40.0 x 25.4	1.5	1.515	•
50.8 x 25.4	1.2	1.438	•
50.8 x 25.4	1.5	1.868	•

• Denotes Normal Stock Range  
Other sizes available on indent

**Finish** Polished. (Unpolished tube, T316 and annealed tube to ASTM A249 available on request)  
**Length** 6m

# TUBE WELD BEND 90° - Long Radius

Manufactured to MAF Specifications



Nominal Pipe Size		Wall Thickness (T)	Centre Line Radius (R)	Centre to Face (A)	(B)	T304	T316
mm	inch						
12.7	OD 1/2	1.2	25.4	44.5	19.1	•	•
15.9	OD 5/8	1.2	25.4	57.2	31.8	•	•
19.0	OD 3/4	1.2	34.9	63.5	28.6	•	•
19.0	OD 3/4	1.5	34.9	63.5	28.6	•	•
25.4	OD 1	1.2	44.5	66.7	22.2	•	•
25.4	OD 1	1.5	44.5	66.7	22.2	•	•
31.8	OD 1-1/4	1.2	57.2	88.9	31.8	•	•
31.8	OD 1-1/4	1.5	57.2	88.9	31.8	•	•
38.1	OD 1-1/2	1.2	76.2	111.1	34.9	•	•
38.1	OD 1-1/2	1.5	76.2	111.1	34.9	•	•
44.5	OD 1-3/4	1.5	79.4	117.5	38.1	•	•
50.8	OD 2	1.2	101.6	133.4	31.8	•	•
50.8	OD 2	1.5	101.6	133.4	31.8	•	•
63.5	OD 2-1/2	1.5	114.3	152.4	38.1	•	•
76.2	OD 3	1.5	139.7	177.8	38.1	•	•
101.6	OD 4	1.5	152.4	177.8	25.4	•	•
152.4	OD 6	2.0	228.6	260.4	31.8	•	•

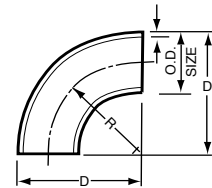
• Denotes Normal Stock Range

Other sizes available on indent

Finish Polished OD. Pickled ID

# TUBE WELD BEND 90° - Short Radius

Manufactured to MAF Specifications



Nominal Pipe Size		Wall Thickness	Centre Line Radius (R)	Overall Dimensions (D)	T304	T316
mm	inch					
25.4	1	1.5	38.1	51 x 51	•	•
31.8	1-1/4	1.5	57.2	76 x 76	•	•
38.1	1-1/2	1.5	57.2	71 x 71	•	•
50.8	2	1.5	76.2	101 x 101	•	•
63.5	2-1/2	1.5	101.6	133 x 133	•	•
76.2	3	1.5	114.3	165 x 165	•	•
101.6	4	1.5	152.4	216 x 216	•	•

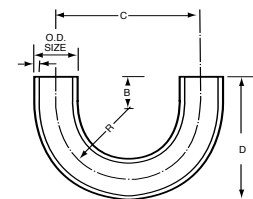
• Denotes Normal Stock Range

Other sizes available on indent

Finish Polished OD. Pickled ID

# TUBE WELD BEND 180°

Manufactured to MAF Specifications



Nominal Pipe Size		Wall Thickness	Centres (C)	Overall Height (D)	Centre Line Radius (R)	(B)	T304	T316
mm	inch							
25.4	1	1.5	91	79	44.5	22.2	•	•
38.1	1-1/2	1.5	155	130	76.2	34.9	•	•
50.8	2	1.5	204	159	101.6	31.8	•	•
63.5	2-1/2	1.5	232	184	114.3	38.1	•	•
76.2	3	1.5	284	216	139.7	38.1	•	•
101.6	4	1.5	311	229	152.4	25.4	•	•
101.6	4	2.0	311	229	152.4	25.4	•	•

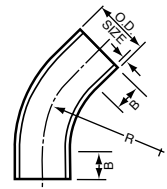
• Denotes Normal Stock Range

Other sizes available on indent

Finish Polished OD. Pickled ID

# TUBE WELD BEND 45° - Long Radius

Manufactured to MAF Specifications



Nominal Pipe Size OD		Wall Thickness mm	Centre Line Radius (R) mm	(B) mm	T304	T316
mm	inch					
25.4	1	1.5	44.5	22.2	•	•
31.8	1-1/4	1.2	57.2	31.8	•	•
31.8	1-1/4	1.5	57.2	31.8	•	•
38.1	1-1/2	1.2	76.2	34.9	•	•
38.1	1-1/2	1.5	76.2	34.9	•	•
50.8	2	1.5	101.6	31.8	•	•
63.5	2-1/2	1.5	114.3	38.1	•	•
76.2	3	1.5	139.7	38.1	•	•
101.6	4	1.5	152.4	25.4	•	•
101.6	4	2.0	152.4	25.4	•	•

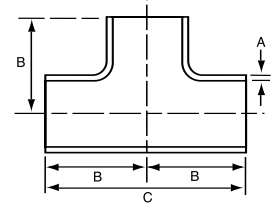
• Denotes Normal Stock Range

Other sizes available on indent

Finish Polished OD. Pickled ID

# TUBE EQUAL TEE

Manufactured to MAF Specifications



Nominal Pipe Size OD		Wall Thickness (A) mm	Branch Length From Tee Centre (B) mm	Overall Length (C) mm	T316
mm	inch				
25.4	1	1.5	38	76	•
38.1	1-1/2	1.5	51	102	•
50.8	2	1.5	63.5	127	•
63.5	2-1/2	1.5	76	152	•
76.2	3	1.5	89	178	•
101.6	4	1.5	114	228	•
127	5	2.0	140	280	•
152.4	6	2.0	170	340	•

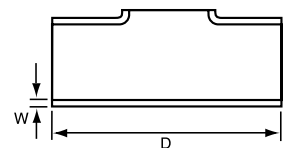
• Denotes Normal Stock Range

Other sizes available on indent

Finish Polished OD. Pickled ID

# TUBE PULLED TEE

Manufactured to MAF Specifications



Nominal Pipe Size OD		Overall Length (D) mm	T316 Wall Thickness 1.5mm
mm	inch		
25.4	1	76	•
38.1	1-1/2	102	•
50.8	2	127	•
63.5	2-1/2	152	•
76.2	3	178	•
101.6	4	228	•
127	5	280	•
152.4	6	170	•

• Denotes Normal Stock Range

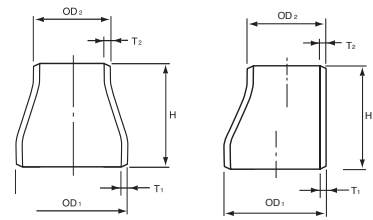
Other sizes available on indent

Finish Polished OD. Pickled ID

# TUBE REDUCERS - Concentric

Manufactured to MAF Specifications

- Eccentric



OD		Concentric Reducer			Eccentric Reducer		
Large End	Small End	Overall Length	Thickness		Overall Length	Thickness	
OD <sub>1</sub>	OD <sub>2</sub>	(H)	(T)	T316	(H)	(T)	T316
mm	mm	mm	mm		mm	mm	
19.0	12.7	25	1.5	•	25	1.5	•
25.4	12.7	25	1.5	•	25	1.5	•
25.4	19.0	25	1.5	•	25	1.5	•
31.8	19.0	30	1.5	•	30	1.5	•
31.8	25.4	30	1.5	•	30	1.5	•
38.1	19.0	30	1.5	•	30	1.5	•
38.1	25.4	30	1.5	•	30	1.5	•
38.1	31.8	30	1.5	•	30	1.5	•
50.8	25.4	40	1.5	•	40	1.5	•
50.8	31.8	40	1.5	•	40	1.5	•
50.8	38.1	40	1.5	•	40	1.5	•
63.5	25.4	50	1.5	•	50	1.5	•
63.5	31.8	50	1.5	•	50	1.5	•
63.5	38.1	50	1.5	•	50	1.5	•
63.5	50.8	50	1.5	•	50	1.5	•
76.2	25.4	60	1.5	•	60	1.5	•
76.2	38.1	60	1.5	•	60	1.5	•
76.2	50.8	60	1.5	•	60	1.5	•
76.2	63.5	60	1.5	•	60	1.5	•
101.6	25.4	70	1.5	•	70	1.5	•
101.6	50.8	70	1.5	•	70	1.5	•
101.6	63.5	70	1.5	•	70	1.5	•
101.6	76.2	70	1.5	•	70	1.5	•
127.0	76.2	100	2.0	•	100	2.0	•
127.0	101.6	100	1.5	•	100	2.0	•
152.4	50.8	120	2.0	•	120	2.0	•
152.4	76.2	120	2.0	•	120	2.0	•
152.4	101.6	120	2.0	•	120	2.0	•
203.2	101.6	150	2.0	•	150	2.0	•
203.2	152.4	150	2.0	•	150	2.0	•
254.0	203.2	180	2.0	•	180	2.0	•
205.0	203.2	220	2.0	•	220	2.0	•

• Denotes Normal Stock Range

Other sizes available on indent

# TUBE RJT FITTINGS

Manufactured to 3-A

Pipe Size		Welding Male Part	Welding Liner	Union Blanks
mm	inch	T316	T316	T304
25.4	1	•	•	•
38.1	1-1/2	•	•	•
50.8	2	•	•	•
63.5	2-1/2	•	•	•
76.2	3	•	•	•
101.6	4	•	•	•
152.4	6	•	•	•

Pipe Size		Hex Nuts	Round Slotted Nuts
mm	inch	T304	T304
25.4	1	•	•
38.1	1-1/2	•	•
50.8	2	•	•
63.5	2-1/2	•	•
76.2	3	•	•
101.6	4	•	•
150.4	6	•	•

Pipe Size		O-Ring Blue Santoprene	Rubber Seal-Stepped
mm	inch		
25.4	1	•	•
38.1	1-1/2	•	•
50.8	2	•	•
63.5	2-1/2	•	•
76.2	3	•	•
101.6	4	•	•
152.4	6	•	•

• Denotes Normal Stock Range

Other sizes available on indent

# TUBE MICO TRI FITTING

Manufactured to 3-A Specifications

Pipe Size		Tri Clamp		Tri Blank		
		(A)	Stock Holding	Depth (A)	Outside Diameter	Stock Holding
mm	inch	mm	T304	mm	mm (B)	T316
25.4	1	53.90	•	6.35	50.39	•
38.1	1-1/2	53.90	•	6.35	50.39	•
50.8	2	67.41	•	6.35	63.91	•
63.5	2-1/2	80.90	•	6.35	77.39	•
76.2	3	94.41	•	6.35	90.91	•
101.6	4	122.23	•	7.92	118.92	•
152.4	6	170.05	•			•

Pipe Size		Welding Ferrule			EPDM Seal
		Depth (A)	Thickness (T)	Stock Holding	Stock Holding
mm	inch	mm	T316	T316	T316
25.4	1	28.58	1.52	•	•
38.1	1-1/2	28.58	1.52	•	•
50.8	2	28.58	1.52	•	•
63.5	2-1/2	28.58	2.03	•	•
76.2	3	28.58	2.03	•	•
101.6	4	28.58	2.03	•	•
152.4	6	21.90	2.03	•	•

• Denotes Normal Stock Range

Other sizes available on indent

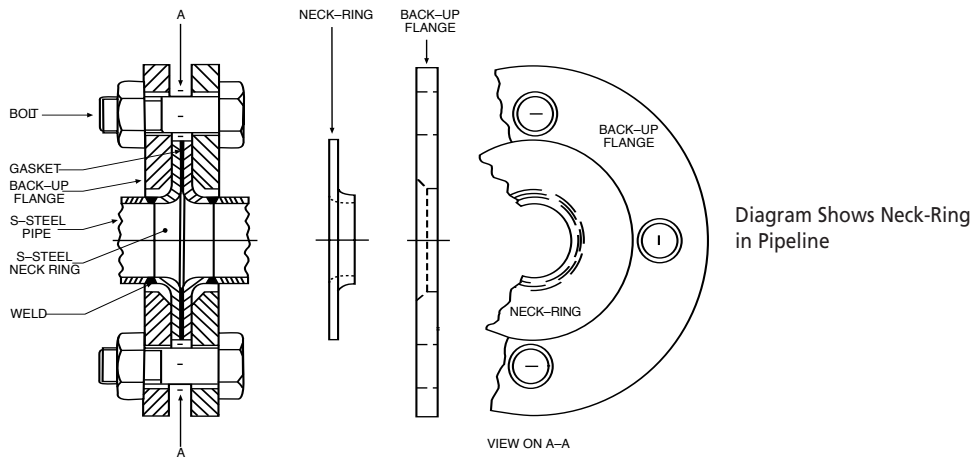
# TUBE PRESSED NECK RING TUBE BACK-UP FLANGE

Most Galvanised Back-Up Flanges meet Table E but some ANSI 150 stock held

Size to Suit OD and ID Tube		Pressed Neck Ring Standard 1.6mm WT T304L	Pressed Neck Ring Heavy 3mm WT T304L	Pressed Neck Ring Heavy 3mm WT T316L	Back-Up Flange Galvanised Iron
mm	inch				
12.7	OD 1/4		•		
19.0	OD 3/4		•		
25.4	OD 1	•	•		•
31.8	OD 1-1/4	•	•	•	•
38.1	OD 1-1/2	•	•	•	•
51.0	OD 2	•	•	•	•
63.5	OD 2-1/2	•	•	•	•
76.2	OD 3	•	•	•	•
76.2	ID 3	•	•	•	•
101.6	OD 4	•	•	•	•
101.6	ID 4	•	•	•	•
127.0	ID 5		•		•
152.4	ID 6		•	•	•
203.2	ID 8		•	•	•
254.0	ID 10		•	•	•

• Denotes Normal Stock Range  
Other sizes available on indent

WT=Wall Thickness  
Refer to Mico Metals Flange Comparison Tables for Neck Ring Dimensions



# TUBE SLIP ON PLATE FLANGE

Slip On Plate Flanges meet Table E

Nom. Pipe Size		Slip On Plate Flanges To Suit Tube - T316
mm	inch	
19.0	3/4	•
25.4	1	•
31.8	1-1/4	•
38.1	1-1/2	•
50.8	2	•
63.5	2-1/2	•
76.2	3	•
101.6	4	•
152.4	6	•
203.2	8	•
254.0	10	•
304.8	12	•

• Denotes Normal Stock Range  
Other sizes available on indent

Refer to Mico Metals Flange Specification Tables for Flange Dimensions  
Ask your Mico Metals team for your copy

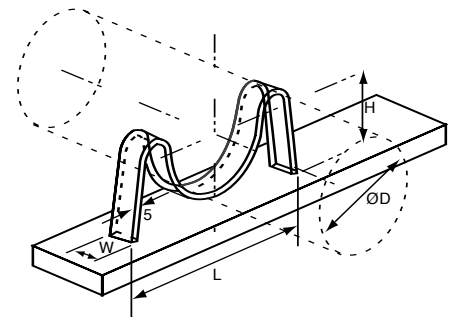
# TUBE CLAMPS

Size		Tube Clamp Plain	Tube Clamp Plain Boss Mount Fitted with 15.7mm Plain Boss	Tube Clamp Threaded Boss Mount Fitted with 10mm Threaded Boss
mm	inch			
25.4	1	•	•	•
31.8	1-1/4	•	•	•
38.1	1-1/2	•	•	•
50.8	2	•	•	•
63.5	2-1/2	•	•	•
76.2	3	•	•	•
101.6	4	•	•	•

• Denotes Normal Stock Range  
Other sizes available on indent

All Tube Clamps are made from T304  
Tube Clamps are hinge type with one set screw and nut

# M BRACKETS



Nominal Pipe Size		T304			
mm	inch	Height (H)	Width (W)	Length (L)	Stock Holding
25.4	1	67	25	75	•
38.1	1-1/2	67	25	85	•
50.8	2	67	25	105	•
63.5	2-1/2	67	25	115	•
76.2	3	67	25	155	•
101.6	4	67	25	170	•
152.4	6	91	40	225	•

• Denotes Normal Stock Range  
Other sizes available on indent

Exact measurement could change depending on stock available

# SADDLE CLAMPS

Size		Saddle Clamps T304
mm	inch	
12.7	1/2	•
19.0	3/4	•
127.0	5	•
152.4	6	•
203.2	8	•
254.0	10	•
304.8	12	•

• Denotes Normal Stock Range  
Other sizes available on indent