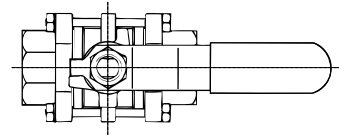
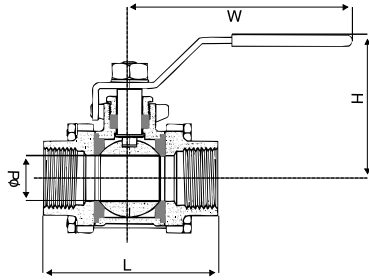


# 3 PIECE SCREWED END FULL BORE VALVE



Size mm	Size inch	OD mm	L mm	H mm	W mm	CV mm	T316
9.52	3/8	12.7	65	42	98	7	•
12.7	1/2	15	66	49	115	10	•
19.0	3/4	20	83	52	115	25	•
25.4	1	25	95	62	143	35	•
31.8	1-1/4	32	111	66	143	46	•
38.1	1-1/2	38	130	77	178	80	•
50.8	2	50.8	151	85	178	110	•

• Denotes Normal Stock Range

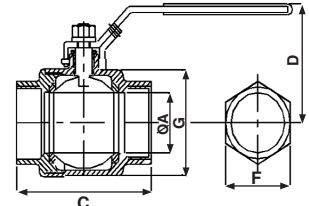
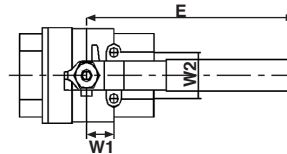
Other sizes available on indent

Body, end cap, ball and stem are manufactured from T316. Handle, gland nut, nut and washer are manufactured from T304.

CV is defined as the volume of liquid in GPM that a valve will carry (with a pressure drop of 6.9KPa when the liquid is water at 15.6°C.)

# 2 PIECE BALL VALVE

Manufactured from T316



Size inch	A	C	D	E	W1	W2	F	G	W(kg)
1/4	11.6	55	46	108	12.7	28.5	22	28.5	0.29
3/8	12.7	55	46	108	12.7	28.5	22	28.5	0.24
1/2	15	65	56	108	12.7	28.5	26	34	0.35
3/4	20	74	62	132	22.4	35	32.5	40.5	0.54
1	25	88	70	160	22.4	35	40	48	0.88
1-1/4	32	102	78	160	22.4	38.1	49	59.5	1.32
1-1/2	38	110	92	195	22.4	38.1	55	70	1.9
2	50	125	102	195	22.4	38.1	69	86.5	2.98

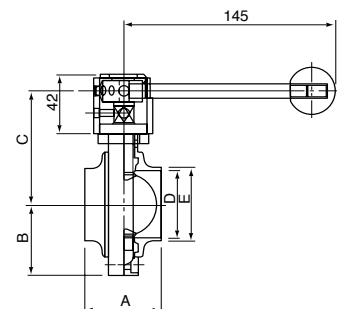
• Denotes Normal Stock Range

Other sizes available on indent

Working Pressure 1000 psi WOG

Test Pressure Seat (air) 80 psi shell (hydro static) 1500 psi

# BUTTERFLY VALVE



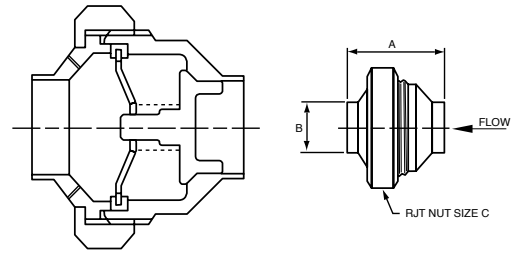
Size mm	Size inch	A mm	B mm	C mm	D mm	E mm	T316
24.5	1	47.6	39.0	70.3	22.2	25.65	•
38.1	1-1/2	47.6	43.5	74.8	34.9	38.35	•
50.8	2	52.4	49.5	80.8	47.6	51.05	•
63.5	2-1/2	54.0	58.5	89.9	60.3	63.75	•
76.2	3	60.0	63.0	94.3	73	76.45	•
101.6	4	60.0	75.5	106.3	97.6	101.85	•

• Denotes Normal Stock Range

Other sizes available on indent

Butterfly Valve handles also available separately if required.

# SANITARY NON RETURN VALVE



Size		Overall Length +/-0.3 mm	RJT Nut Size mm	T316
mm	inch			
19.0	3/4	59.5	25.4	• • • • •
24.5	1	66.0	38.1	
38.1	1-1/2	82.5	50.8	
50.8	2	85.0	63.5	
63.5	2-1/2	100.0	76.2	
76.2	3	114.0	102	
101.6	4	188.0	127	

• Denotes Normal Stock Range

Other sizes available on indent

# SUPERCLEAN PICKLING PASTE



**SUPERCLEAN** Pickling Paste is a high performance gel pickling agent for stainless steel. It is used to remove the black oxide marks or burn scale left during welding of stainless steel.

After use with **SUPERCLEAN** the weld area should look the same as the rest of the stainless steel being used. **SUPERCLEAN** leaves a clean professional finished stainless steel weld area, and removes the free iron contamination which is the major cause of corrosion.

### Benefits

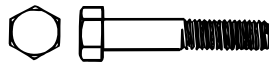
- A fast acting one step treatment
- Superior adhesion on vertical surfaces
- Completely water rinsable
- A non residual treatment

**SUPERCLEAN** is available in a 2.5kg jar. Each pack comes with an acid resistant application brush.

# STAINLESS STEEL FASTENERS

Mico Metals carry an extensive range of stainless steel fasteners including...

• Hex Bolts



• Set Screws



• Nuts



• Washers



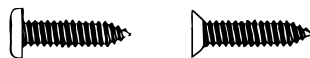
• Threaded Rod



• Rivets



• Self Tapping Screws



• Machine Screws



Ask your Mico Metals team for a copy of our complete Fasteners Catalogue